

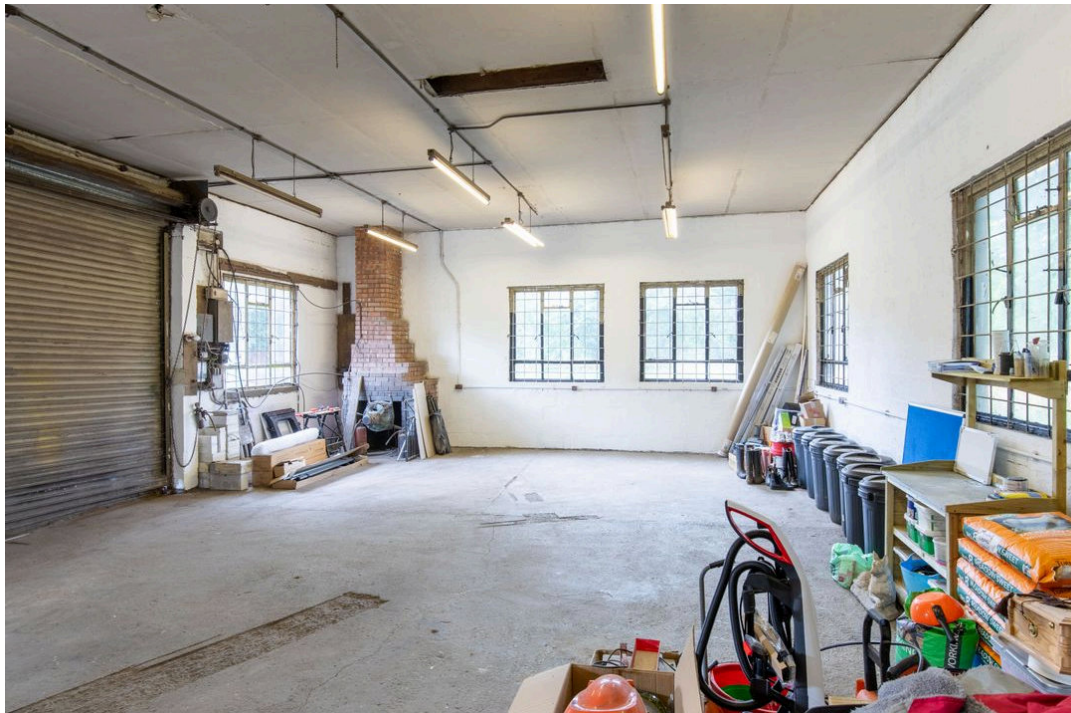


Workshop At Alexander House (Lot 2)

Grey Row, Ruthvenfield, PH1 3JR

bellingram.co.uk

 **Bell
Ingram**



Property Description

Standing adjacent to Alexander House, the Workshop is a large former commercial premises constructed in the mid 1980s.

As it currently stands, the workshop includes a large open plan area, office, WC and store with access to the floored attic space.

The workshop, originally constructed in the 1980s, is no longer in commercial use. In 2010, Planning Consent (Ref: 10/00050/DOM20) and Building Warrant were granted for its conversion to a three/four bedroom residential dwelling set over two floors. The workshop and parking courtyard extend to 0.115 acres.

The workshop is being offered on its own, or as a whole with Alexander House.



Plans

Approx. gross internal floor area

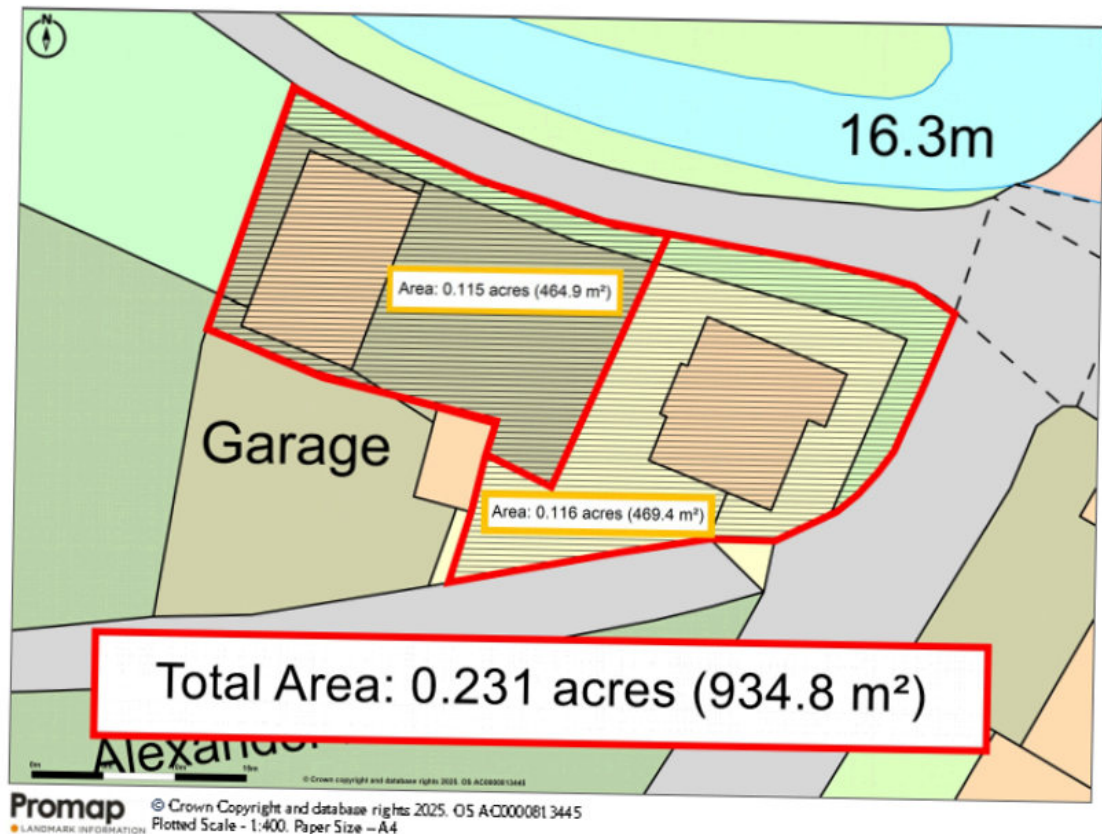
As per proposed floorplans

Location

Ruthvenfield is a small hamlet with a rich historical background in a peaceful semi-rural setting.

The nearby city of Perth offers an excellent selection of retail outlets, professional services and cultural attractions. The surrounding countryside offers a wealth of activities including hill walking, climbing, fishing, water sports and skiing.

Alexander House is ideally situated for commuters and education with the highly regarded rural primary school situated adjacent to Alexander House and several secondary schools in Perth. There is a choice of respected private schools in the area.



Details

Local Authority

Perth & Kinross Council

Council Tax

Band = NA

Tenure

Freehold

EPC

EPC Rating = EXEMPT

Property has not yet been converted to residential use

Services & Additional Information

Directions

Travel west out of Perth on the A85 road to Crieff. Having passed Tesco and then on through the traffic lights, take the next road on the right signposted to Ruthvenfield and Huntingtower Castle. Follow the road round and Alexander House is located on the left immediate past the small village school.

For viewers using the 'what3words' app, the location of the Wrokshop at Alexander House is: [///pets.hint.mixer](#)

The services to the property include mains gas, water, electricity and drainage is to a private septic tank.



Grey Row, Ruthvenfield, PH1 3JR



| Offers Over £165,000

Enquire



Carl Warden

Perth

01738 621121

carl.warden@bellingham.co.uk



Tax Calculator



Free Market Appraisal



View Digital Brochure



Property Search



View On Website

Viewing strictly by appointment

Published: July 2025

Property Ref: PER250049

powered by

FluxPro

Important Notice: Bell Ingram, its clients and any joint agents give notice that 1: They are not authorised to make or give any representations or warranties in relation to the property either here or elsewhere, either on their own behalf or on behalf of their client or otherwise. They assume no responsibility for any statement that may be made in these particulars. These particulars do not form part of any offer or contract and must not be relied upon as statements or representations of fact. 2: Any areas, measurements or distances are approximate. The text, photographs and plans are for guidance only and are not necessarily comprehensive. It should not be assumed that the property has all necessary planning, building regulation or other consents and Bell Ingram have not tested any services, equipment or facilities. Purchasers must satisfy themselves by inspection or otherwise.



Grey Row, Ruthvenfield, PH1 3JR



0



0



0

| Offers Over £165,000