



F E N T O N
G R O V E

Refined living in rural Perthshire



Welcome to your new home!

03 Location, Location, Location

Situated in the picturesque village of Wolfhill, Perthshire, find out what this location has to offer.

07 Area Map and Site Plan

Site and area plans of the development.

25 Gallery of Our Previous Work

Images of previous homes we have completed to use as inspiration for your own new home.



Your Home, Your Way

Learn how you can customise your new home with The Good House Company.



House types and Layouts

Take a look at the house types and floor plans available at Fenton Grove.

09

11

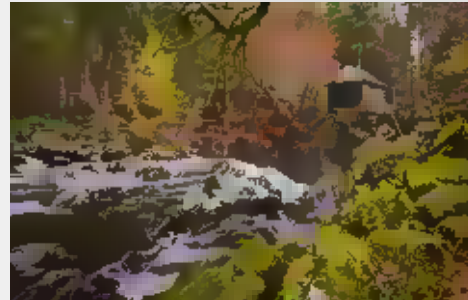
CONTENTS

LOCATION, LOCATION, LOCATION

Situated in the picturesque village of Wolfhill, Perthshire, find out what this location has to offer.



Wolfhill is a small village nestled between the Sidlaw Hills and the River Tay in Perthshire. It sits just 7 miles north-east of the city of Perth, making it rural yet close to all the amenities a well-connected city offers. Wolfhill is also within easy reach of Dundee, again with plentiful amenities including shops, restaurants, and leisure facilities.



Both Edinburgh and Glasgow are also within comfortable reach by car for regular visits or day trips, or for connections to the rest of the UK and the world.

Wolfhill is also nicely placed for those who enjoy the outdoors, with easy access to the stunning Scottish Highlands for leisure activities and holidays.



“
We were the second house of eight on a scheme that has developed precisely to schedule. The layout of the houses is conducive to a community feel, and it is nice to feel part of that community.”

LEISURE, LEISURE, LEISURE

Fenton Grove is located in an enviable position, close to a wide range of amenities and leisure activities.



Wolfhill offers village-scale living within a quiet, scenic environment. History and nature are close by, with historic sites and the rolling landscapes of the Sidlaw Hills on your doorstep. Further afield, the Cairngorms are within easy reach for skiing, walking, and other outdoor pursuits.

For those who are keen



golfers, there are multiple golf courses nearby, including Rosemount at Blairgowrie, and world-renowned courses at both Gleneagles and St Andrews, all within easy reach by car.

For the more adventurous, Crieff Hydro offers multiple outdoor pursuits, from alpaca trekking and archery, to quad biking and treetop

adventures, and everything in between. There are also extensive spa facilities at Crieff, for those who prefer to relax.

The city of Perth is just a short drive from Wolfhill and offers all the amenities that you would expect. With shops and banks, museums, gardens, a concert hall and cinema, art gallery, and leisure centre with swimming pool, fitness classes and health suite, there is plenty to do for everyone.

In addition, Perth boasts multiple pubs, restaurants, and bars for evening



entertainment.

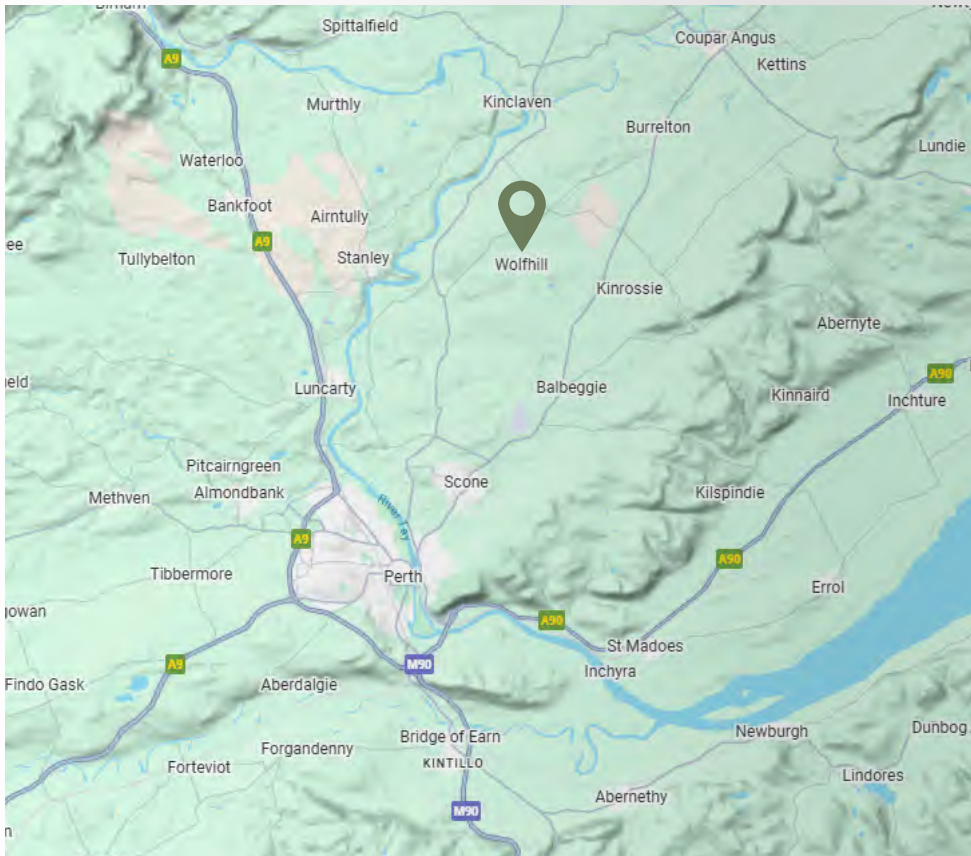
The city of Dundee is also within easy reach of Wolfhill. The city boasts multiple art galleries, including the first V&A outside London. There is also an observatory, science centre, and multiple parks. Dundee also offers shopping, leisure activities, and a great selection of eateries and entertainment venues.

Further afield, both Edinburgh and Glasgow are a comfortable drive away, for more extensive amenities, and also excellent transport links to the rest of the world.



LOCATION MAP AND SITE PLAN

Fenton Grove is a small, exclusive development of 14 three and four bedroom homes set in the Perthshire countryside.

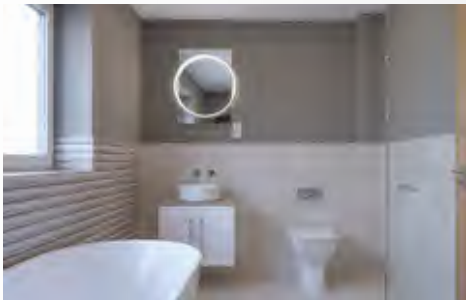


YOUR HOME, YOUR WAY

At The Good House Company, you can choose every detail to allow you to create a home that is truly yours.

When you purchase a Good House Company home, you become part of our family and we will hand-hold you through the whole process of creating your dream bespoke home.

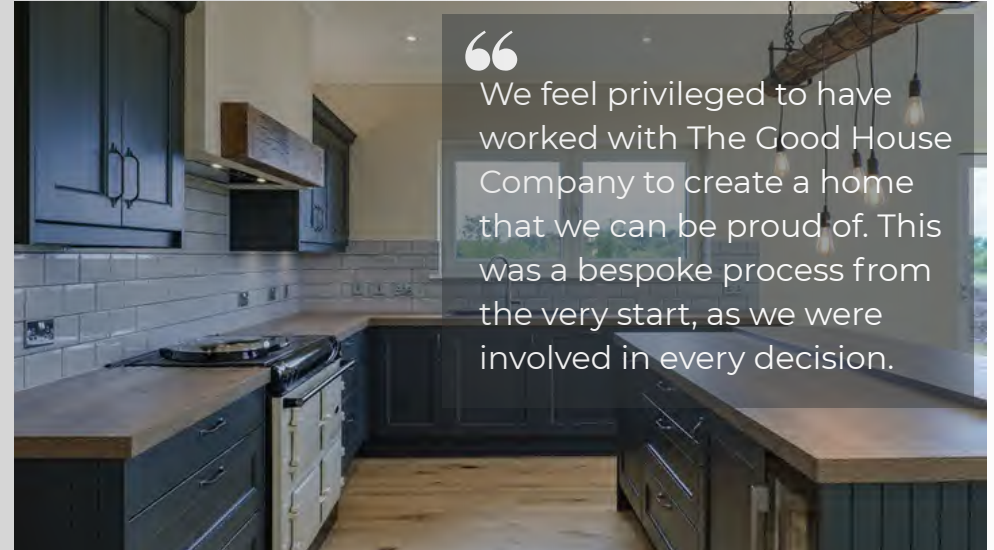
We pride ourselves on being client-centric, which results in beautiful homes that are an accurate reflection of our clients taste and style.



09

We design homes that fit into the landscape, and use traditional natural materials such as slate, timber and stone. However, we also use modern insulation techniques and air-source-heat-pumps with underfloor heating, to ensure that your heating costs are kept to a minimum.

You are able to choose every



“

We feel privileged to have worked with The Good House Company to create a home that we can be proud of. This was a bespoke process from the very start, as we were involved in every decision.



detail of your home. We will guide you through the process of planning your dream kitchen and bathrooms. You are also able to choose tiles, flooring, paint colours, door style, fireplace, stove, and even the position of lighting and

plug sockets. We are also able to make additions such as shelving and media walls.

We also offer a full aftercare service for 12 months, to ensure that you are completely happy with your new home.

10

HOUSE TYPE A

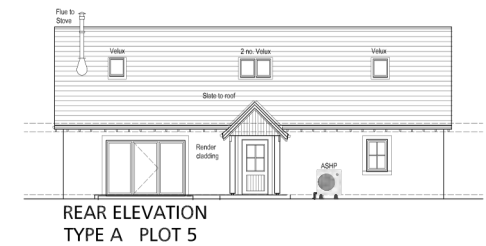
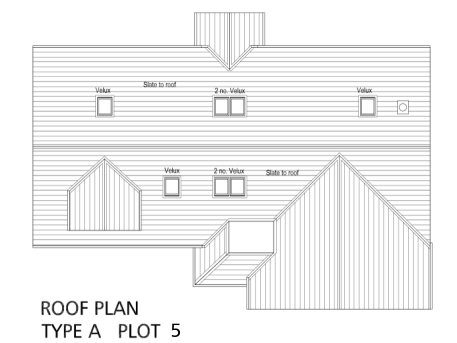
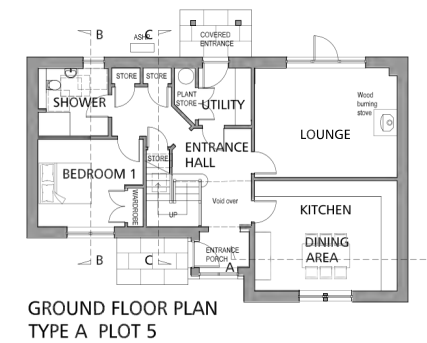
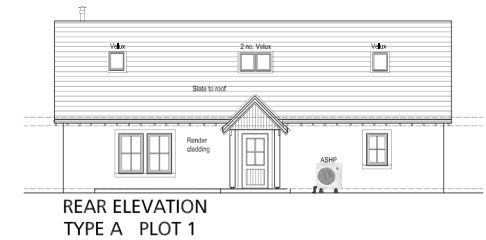
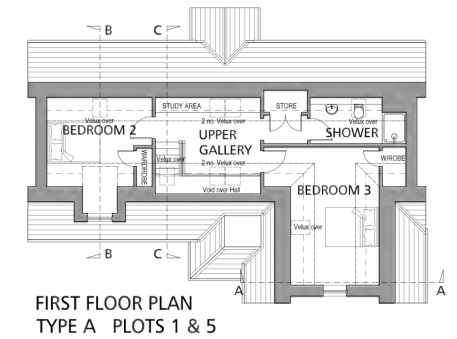
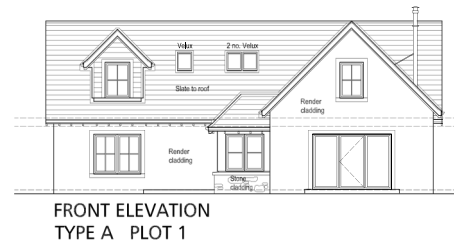
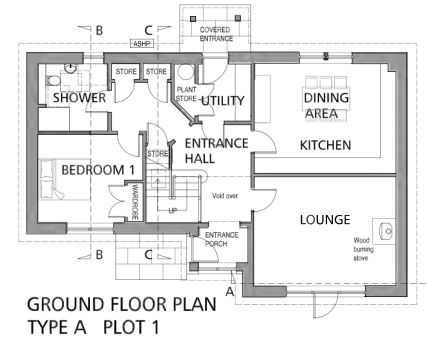
PLOTS 1 AND 5 - 3 BEDROOM



For illustrative purposes only

House Type A is a three bedroom one and a half storey home, with two shower rooms, lounge, kitchen-dining room, utility room, entrance porch, and a covered entrance to the rear.

You will enjoy the opportunity to customise your new home, with your choice of kitchen, bathrooms, and all finishes.



HOUSE TYPE B

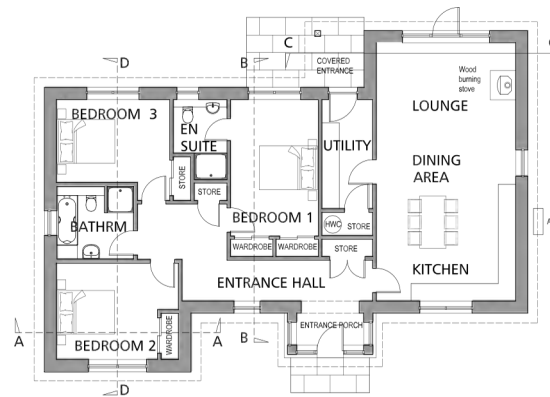
PLOTS 6 AND 14 - 3 BEDROOM



For illustrative purposes only

House Type B is a single storey three bedroom home, with en-suite to the master bedroom, family bathroom, open plan living, dining, kitchen room, utility, entrance porch, and covered entrance to the rear.

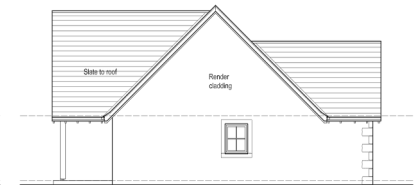
You will enjoy the opportunity to customise your new home, with your choice of kitchen, bathrooms, and all finishes.



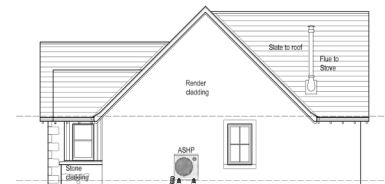
GROUND FLOOR PLAN
Type B PLOTS 6 & 14



FRONT ELEVATION



SIDE ELEVATION



SIDE ELEVATION



REAR ELEVATION

HOUSE TYPE C

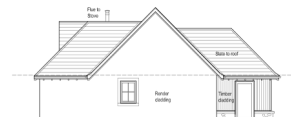
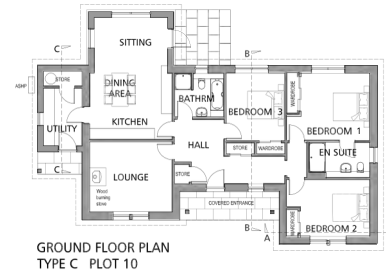
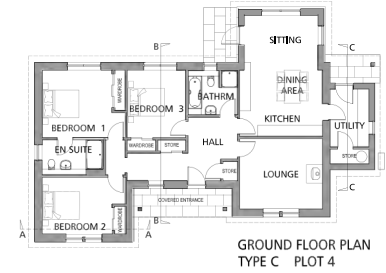
PLOTS 4 AND 10 - 3 BEDROOM



For illustrative purposes only

House Type C is a single storey three bedroom home, with en-suite to master bedroom, family bathroom, separate lounge, open plan kitchen, dining, family room, and utility room.

You will enjoy the opportunity to customise your new home, with your choice of kitchen, bathrooms, and all finishes.



HOUSE TYPE D

PLOTS 12 AND 13 - 4 BEDROOM

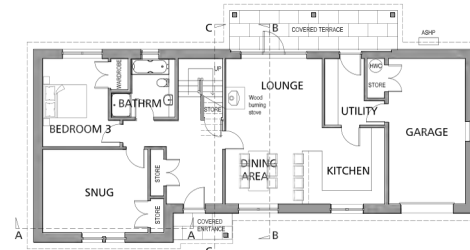


For illustrative purposes only

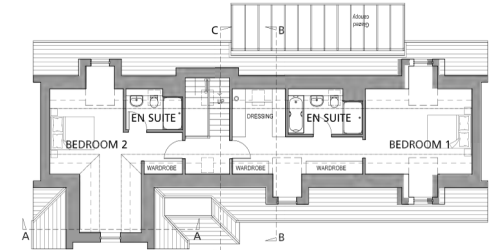
House Type D is a 4 bedroom one-and-a-half storey home. The home features en-suite bathrooms to both upper level bedrooms, two ground floor bedrooms, family bathroom, open plan kitchen, dining, living room, separate utility

room, and integrated garage.

You will enjoy the opportunity to customise your new home, with your choice of kitchen, bathrooms, and all finishes.



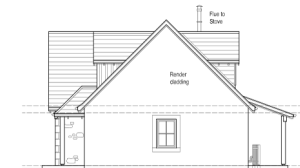
GROUND FLOOR PLAN - TYPE D
PLOT 12 & PLOT 13 (handed)



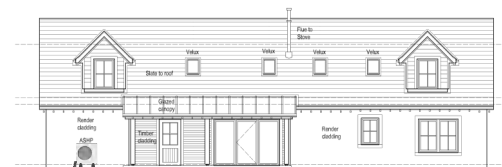
FIRST FLOOR PLAN - TYPE D
PLOT 12 & PLOT 13 (handed)



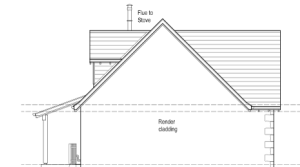
FRONT ELEVATION - TYPE D
PLOT 12 & PLOT 13 (handed)



SIDE ELEVATION - TYPE D
PLOT 12 & PLOT 13 (handed)



REAR ELEVATION - TYPE D
PLOT 12 & PLOT 13 (handed)



SIDE ELEVATION - TYPE D
PLOT 12 & PLOT 13 (handed)

HOUSE TYPE D+

PLOT 11 - 4 BEDROOM

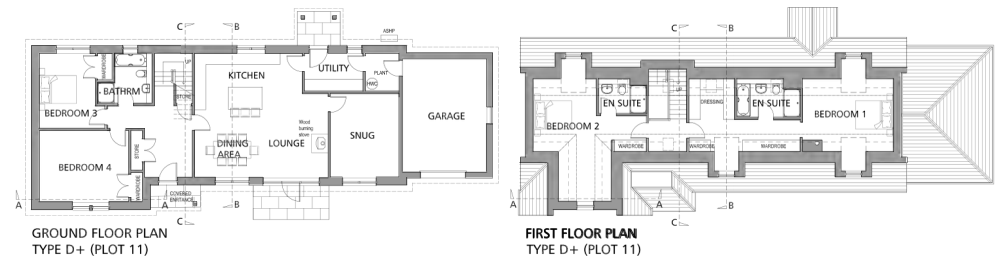


For illustrative purposes only

House Type D+ is a four bedroom one-and-a-half storey home. It features two upper bedrooms, both with en-suite bathrooms. There are two ground floor bedrooms, a family bathroom, open plan kitchen, dining, living room,

separate utility, snug, and integrated garage.

You will enjoy the opportunity to customise your new home, with your choice of kitchen, bathrooms, and all finishes.



HOUSE TYPE D+2

PLOT 9 - 4 BEDROOM

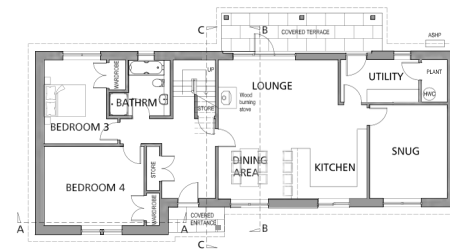


For illustrative purposes only

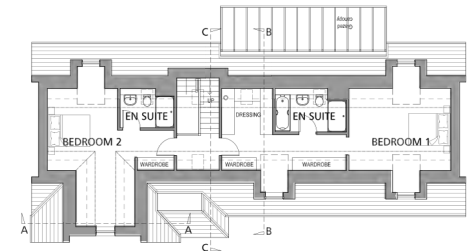
House Type D+2 is a four bedroom one-and-a-half storey home. It features two upper bedrooms, both with en-suite bathrooms. There are two ground floor bedrooms, a family bathroom, open plan kitchen, dining, living room,

utility room, snug, and separate garage.

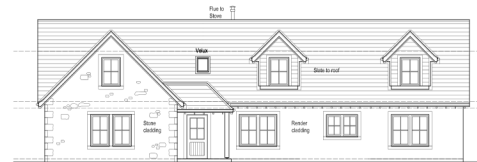
You will enjoy the opportunity to customise your new home, with your choice of kitchen, bathrooms, and all finishes.



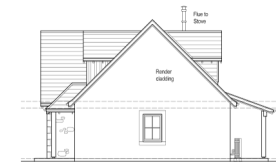
GROUND FLOOR PLAN
Type D+2 PLOT 9



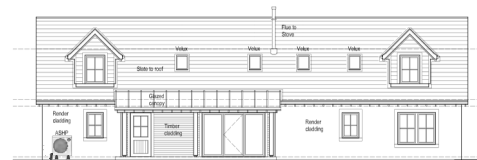
FIRST FLOOR PLAN
Type D+2 PLOT 9



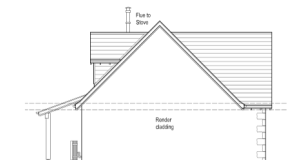
FRONT ELEVATION
Type D+2 PLOT 9



SIDE ELEVATION
Type D+2 PLOT 9



REAR ELEVATION - TYPE D+2
PLOT 9



SIDE ELEVATION
Type D+2 PLOT 9

HOUSE TYPE E

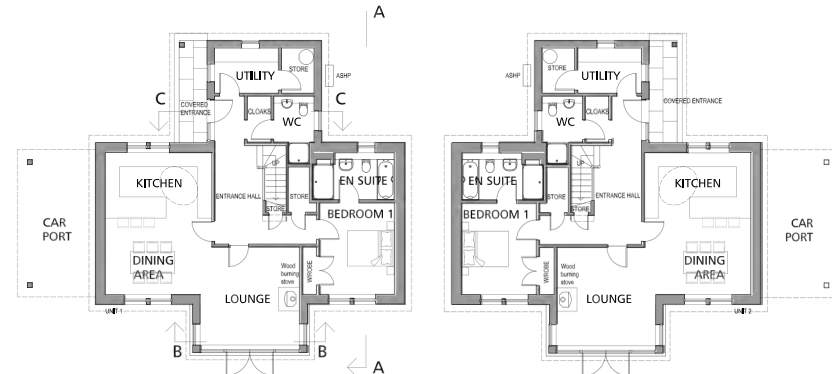
PLOTS 2, 3, 7 AND 8 - 3 OR 4 BEDROOM



For illustrative purposes only

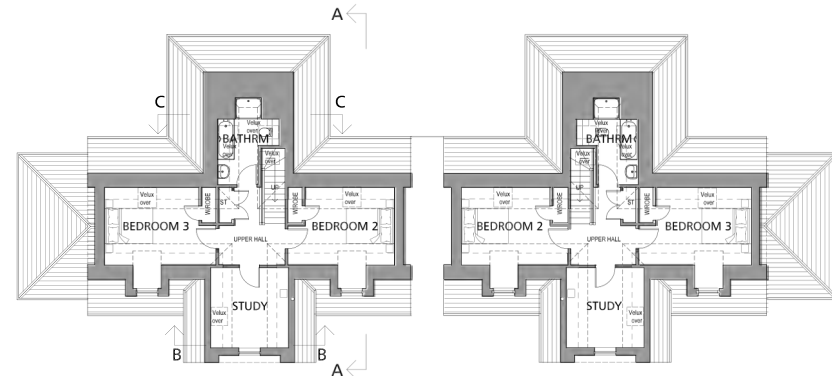
House type E is a detached three or four bedroom home. Each home features a ground floor master bedroom with en-suite, three further first floor bedrooms with family bathroom, ground floor WC, utility room and open plan

kitchen, dining, living room. You will enjoy the opportunity to customise your new home, with your choice of kitchen, bathrooms, and all finishes.



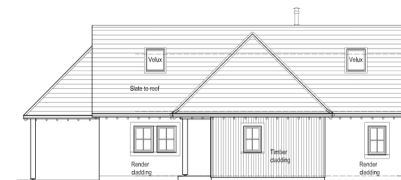
GROUND FLOOR PLAN
TYPE E (PLOTS 2 & 7)

GROUND FLOOR PLAN
TYPE E Handed (PLOTS 3 & 8)

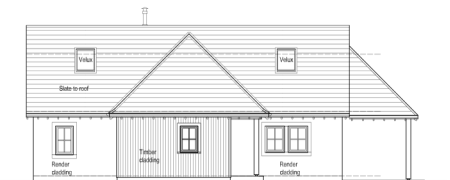


FIRST FLOOR PLAN
TYPE E (PLOTS 2 & 7)

FIRST FLOOR PLAN
TYPE E Handed (PLOTS 3 & 8)



REAR ELEVATION
TYPE E Handed (PLOTS 3 & 8)



REAR ELEVATION
TYPE E (PLOTS 2 & 7)



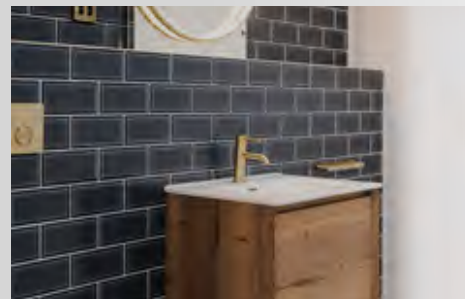
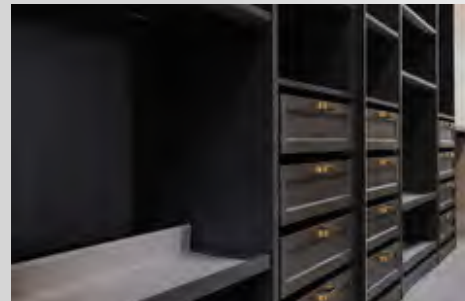
FRONT ELEVATION
TYPE E (PLOTS 2 & 7)



FRONT ELEVATION
TYPE E Handed (PLOTS 3 & 8)

GALLERY OF OUR WORK

Please feel free to use these images of our previous work for inspiration.



ABOUT US



The Good House Company has built a well-earned reputation for crafting beautifully designed luxury homes in Kinross-shire and surrounding areas. At The Good House Company, we believe that a home is more than just a place to live; it is a sanctuary, a reflection of your aspirations, and a

testament to the art of fine living.

Founded in 2006, The Good House Company has built over 100 luxury homes. We have a passion for excellence and a commitment to quality, and we pride ourselves on using traditional building

materials alongside cutting-edge energy-saving technologies to create homes that are not only beautiful but also energy-efficient. Being deeply rooted in the Perth and Kinross area, The Good House Company has an intimate understanding of the local landscape, architecture, and community. This local expertise allows us to build small developments that harmonise with their surroundings while offering modern luxury and every convenience.

We believe in building relationships as strong as the homes we create. Our dedicated team will work closely with you throughout the entire process. As a client of The Good House Company, you'll benefit from our bespoke approach,

allowing you to customise every detail of your home. From room layouts through to finishing touches, we ensure that your new home is a unique reflection of your personal style. The results are a home that is truly yours.





All details provided, including computer generated images and floorplans, are indicative and intend to act as a guide only and may change. These details should be treated as general guidance only and cannot be relied upon as accurately describing any of the specified matters prescribed by any order under the Consumer Protection from Unfair Trading Regulations 2008. Nor do they constitute a contract or a warranty. Dimensions should not be used for appliances or furniture. Fenton Grove is a working name and may not form part of the final address.

www.thegoodhousecompany.co.uk

© 2025 TGHC (Scotland) Limited



FENTON
GROVE